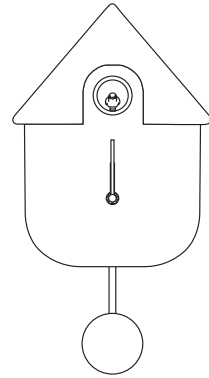


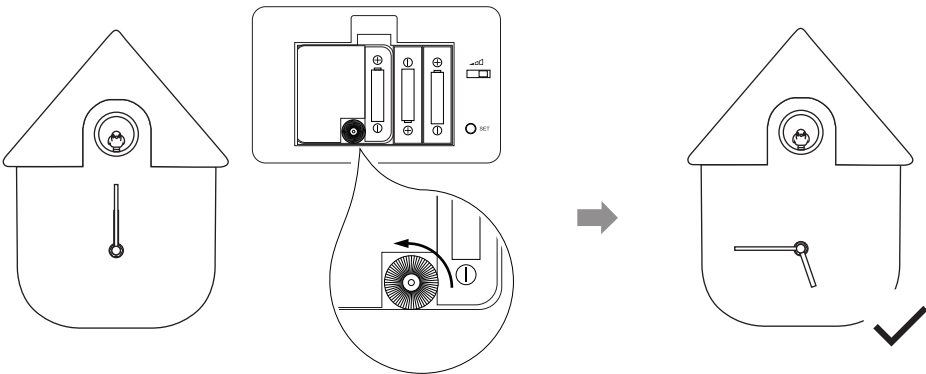
User's Manual

- Thank you for your purchase.
- Read this User's Manual before using this product.
- Keep this User's Manual for future reference.



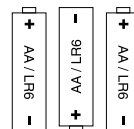
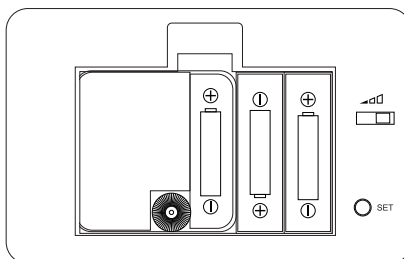
Steps for use:

(1) Open the battery cover (**no battery inside**) and turn the hands knob in the direction of the arrow and set time to 05:45 as below :

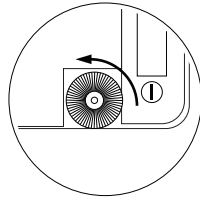
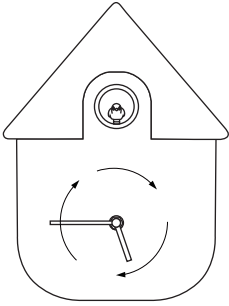


Do not touch the clock hands directly to set time.

(2) Insert 3xAA batteries (not included) as illustrated.



(3) Continue to turn the hands knob in the direction of the arrow to set the current time.

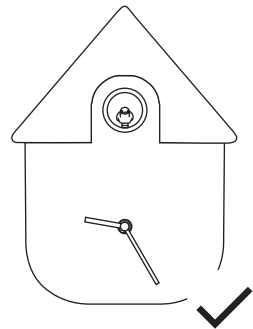
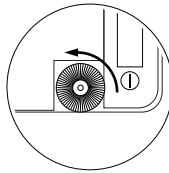
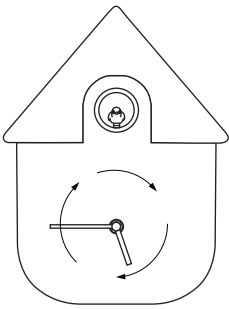


The time can be set even when the bird is singing.

The cuckoo will stop singing from 10 p.m. (22:00) to 5 a.m. (05:00), so the current time needs to be set correctly according to 24-hour mode.

For example:

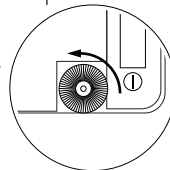
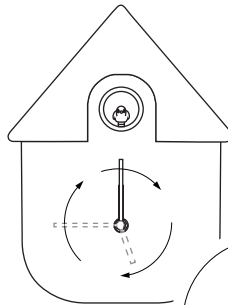
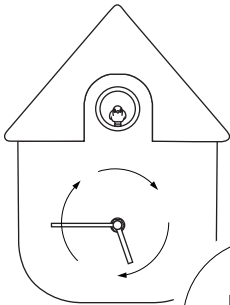
Set time for 9:25 a.m. (09:25)



05:45

09:25

Set time for 9:25 p.m. (21:25)

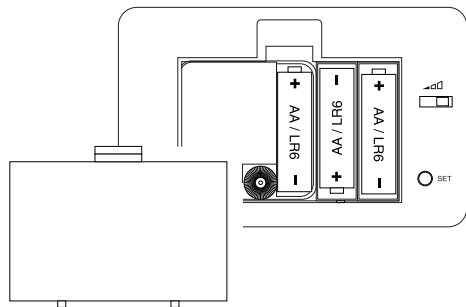


05:45

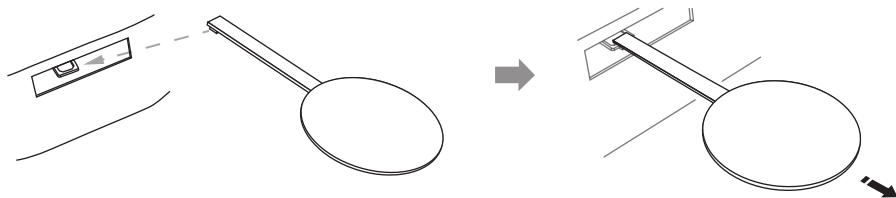
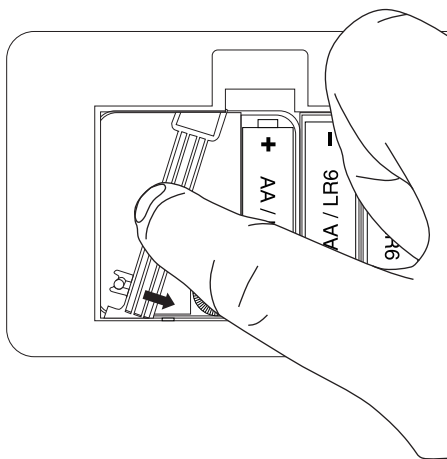
12:00

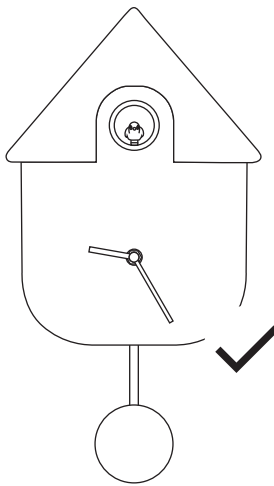
21:25

- (4) Close the battery cover after the time is set correctly. Do not press “SET” button during the process. **Otherwise, please take out the batteries and re-set the time by following steps (1)~(4) above.**



- (5) Release the pendulum driver and hang the pendulum to it.

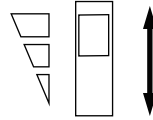




Cuckoo singing function:

- About the song volume

The song volume can be adjusted in 3 levels by the volume adjust switch.



- Cuckoo silence period: 10 p.m. (22:00) to 5 a.m. (05:00).
During this period, the cuckoo will NOT move nor sing.

- Testing the cuckoo singing: "SET" button

By pressing the "SET" button, the cuckoo will come out and sing. But if the current time is in silence period, the cuckoo might not come out and sing even by pressing "SET" button. In this situation, please press more times of "SET" button until the cuckoo come out and sing.



After pressing the "SET" button, please take out the batteries and re-set the time by following "Step for use" steps (1)~(4) above.

Caution Changing batteries:

To avoid battery leakage or explosion, please follow the below.

- If the clock stops, either replace the battery with a new one or remove the battery.
- Even when the clock is still working, change the battery regularly once per year.



When changing batteries, please set the time by referring to the "Steps for Use".



Types of battery

- As a general rechargeable battery has low voltage, please do not use with this product.
- Dry manganese batteries have a shorter life compared to dry alkaline batteries.

Troubleshooting:

Check these points first if the product does not appear to be working properly.

Problem	Cause & Solution
The time is slow or fast.	Time accuracy is affected by temperature which may cause the time to speed up or slow down. (Usable temperature : 0 - 40 °C) If the time inaccuracy builds up, make sure to turn the hands knob in the direction of the arrow to fix the correct time. Or to change batteries.
The sound of the song slows down. Or the clock is loose time.	Please change batteries.
When the cuckoo comes out and sings, there are noises other than the cuckoo sound.	This is the sound of the cuckoo or bird moving. It is not a malfunction.
The cuckoo does not move back to the house.	The cuckoo might not move back to the house during time setting process, because the current time is in silent period. Please leave it as it is, and the cuckoo will resume to move and sing after the silent period. Or you can move back the cuckoo by pressing "SET" button. But please take out the batteries and re-set the time by following "Step for use" steps (1)~(4) above.
Cuckoo silence period is not from 10 p.m. (22:00) to 5 a.m. (05:00).	Please take out the batteries and re-set the time by following "Step for use" steps (1)~(4) above.

KARLSSON
QUALITY TIME

Karlsson is a trademark of Present Time
Present Time/ Almere/ Holland
www.karlsson-clocks.com

